

Application

Regulation of the pneumatic actuator speed by restricting the supply air

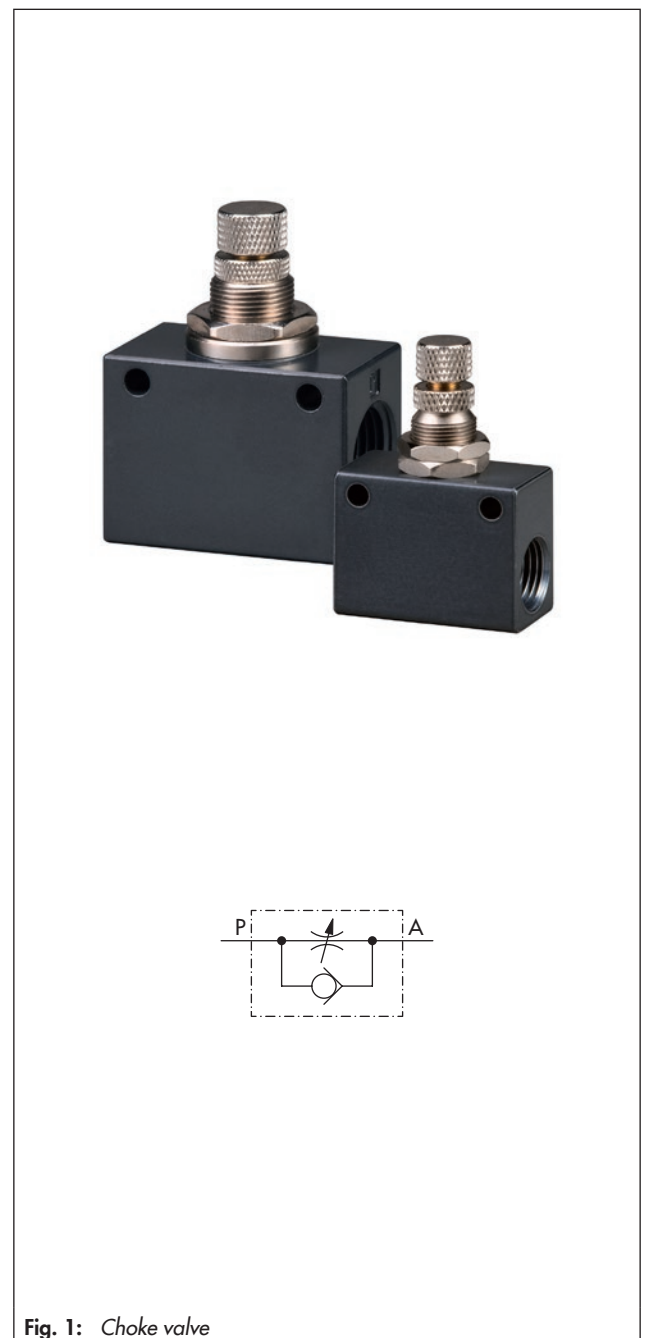


General

The choke valve is a combination of a supply air restrictor and a check valve. It is used to regulate the speed of pneumatic actuators. The flow rate of the supply air is regulated by an adjustable restrictor. The exhaust air is released in the opposite direction without restriction.

Special features

- Adjustable supply air restrictor
- Ambient temperature from -20 to $+70$ °C
- Operating pressure 0.5 to 9.5 bar
- G $\frac{1}{4}$ or G $\frac{1}{2}$ threaded connections



Technical data

Material	Aluminum	
Medium	Instrument air (free from corrosive substances)	
Compressed air quality according to ISO 8573-1	Max. particle size and density: Class 4 · Oil content: Class 3 · Pressure dew point: Class 3 or at least 10 K below the lowest ambient temperature to be expected	
K_{VS} ¹⁾ (direction of flow)	P→A	0 to 0.5 (1/4"), 0 to 1.6 (1/2")
	A→P	0.34 to 0.5 (1/4"), 0.9 to 2.2 (1/2")
Operating pressure	0.5 to 9.5 bar	
Ambient temperature	-20 to +70 °C	
Mounting position	Any desired position	
Connection	G 1/4 or G 1/2	
Approx. weight	0.2 kg	

¹⁾ The air flow rate when $p_1 = 2.4$ bar and $p_2 = 1.0$ bar is calculated using the following formula:
 $Q = K_{VS} \times 36.22$ in m^3/h .

Dimensions

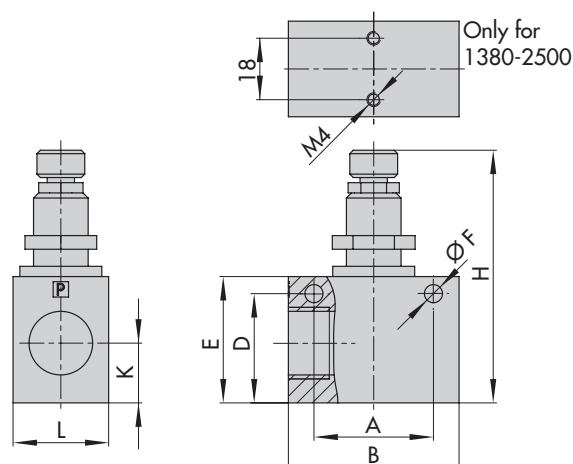


Fig. 2: Dimensions in mm

Versions and ordering data

Choke valve									
Connection	Dimensions (see Fig. 2)								Item no.
	B	L	E	H	K	A	D	F	
G 1/4	38	18	27	56.3	13.5	26	23	4.3	1380-2498
G 1/2	50	28	37	74	17.5	35	32	5.3	1380-2500

Specifications subject to change without notice.



SAMSOMATIC GMBH · A member of the SAMSON GROUP
 Weismüllerstraße 20 · 22 · 60314 Frankfurt am Main, Germany
 Phone: +49 69 4009-0 · Fax: +49 69 4009-1644
 samsomatic@samsomatic.de · www.samsomatic.de

AB 12 EN

2015-11-26 · English